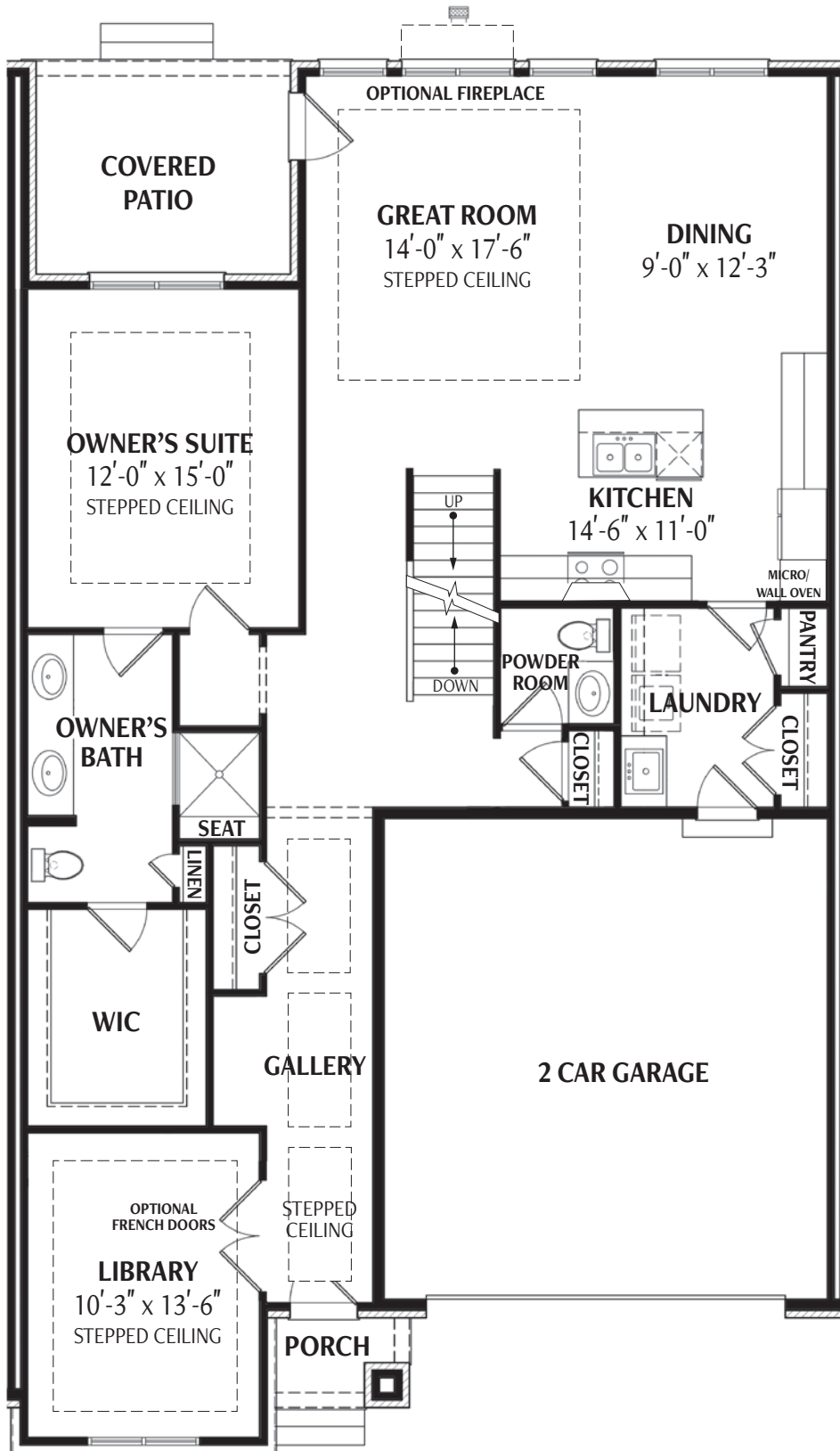


# GRAMERCY RIDGE



## Floorplan B3

2,316 Square Feet

1 Half, 3 Full Bathrooms  
3 Bedrooms with Library  
and Loft

Covered Patio  
2 Car Attached Garage



**Hunter Pasteur**  
HOMES

T 248.305.7100

[www.LiveGramercyRidge.com](http://www.LiveGramercyRidge.com)

# Floorplan B3

## Second Floor

